

**MINUTES OF THE REGULAR MONTHLY MEETING
OF THE BOARD OF DIRECTORS
SEAL BEACH MUTUAL TWELVE
September 14, 2017**

The Regular Meeting of the Board of Directors of Seal Beach Mutual Twelve was called to order by President Gillon at 9:04 a.m. on Thursday, September 14, 2017, followed by the *Pledge of Allegiance*, in the Administration Building, Conference Room A.

ROLL CALL

Present: President Gillon, Secretary Sprague, CFO Ferraro, and Directors Anderson and Woodruff

Absent: Vice President Carson

GRF Representative: Mrs. Damoci

Guests: Three shareholders of Mutual Twelve

Staff: Ms. Hopkins, Mutual Administration Director
Ms. Miller, Finance Director
Mr. Harper, Building Inspector
Mr. Antidel, Building Inspector
Ms. Day, Recording Secretary

President Gillon welcomed guests and staff to the meeting.

SHAREHOLDER'S COMMENTS

One shareholder made a comment.

GUEST SPEAKER – Ms. Miller

Ms. Miller presented the proposed 2018 Mutual budget.

Following a discussion, and upon a MOTION duly made by CFO Ferraro and seconded by Director Woodruff, it was

RESOLVED, to accept the 2018 Operating Budget for Mutual Twelve of \$1,237,396, resulting in a regular monthly Mutual assessment of \$228.13 per apartment per month, for an increase of \$4.61 per month over the total Mutual operating costs of 2017, as presented, and to adopt this budget forthwith.

The MOTION passed.

Ms. Miller left the meeting at 9:25 a.m.

GRF REPRESENTATIVE

Mrs. Damoci presented her report (attached). In addition, she discussed LA Seismic requesting to come into the community to perform seismic testing and install equipment underground in all Mutuals. This is the second time they have attempted to come into the community. The history of this request is that they are looking for oil. It was the consensus of the Board not to let LA Seismic into Mutual Twelve to do the underground seismic survey.

MINUTES

President Gillon asked for any corrections to the Regular Meeting minutes of August 10, 2017; and the Special Meeting minutes for August 7, 2017; and August 14, 2017. There being no corrections, and upon a MOTION duly made by President Gillon and seconded by Secretary Sprague, it was

RESOLVED, to approve the Regular Meeting minutes of August 10, 2017; and the Special Meeting minutes for August 7, 2017; and August 14, 2017; by Calendar Consent.

The MOTION passed.

BUILDING INSPECTOR'S REPORT

Inspectors Harper and Antisdell discussed the monthly report (attached).

Inspector Antisdell discussed the refurbishing of the walk light poles and quotes he received from Schlick Services. He will obtain a quote on globe replacements for the walk lights. It was the consensus of the Board to postpone action on the walk light refurbishing to obtain more information to be brought to the October Board Meeting.

Following questions, Inspectors Antisdell and Harper left the meeting at 9:43 a.m.

CORRESPONDENCE

President Gillon received two letters from shareholders.

ANNOUNCEMENTS

President Gillon stated even though California has lifted the state water restrictions the City of Seal Beach is still enforcing Seal Beach watering restrictions. The shareholder restrictions are: all watering shall be between 5:00 p.m. and 9:00 a.m. the next morning; irrigation shall not exceed 15 minutes. Watering with a hose must be done by a person holding the hose, the hose must have a shutoff valve, and the person cannot leave the hose unattended. No water shall be used to wash down sidewalks or driveways. Please continue to be Water Wise and comply with the City's water restrictions.

ANNOUNCEMENTS (continued)

While working with our Arborist this year to keep our trees healthy we have learned many new things. The most important is that having plantings around trees and putting objects such as pots, lights, ornaments, and boulders around the base of the trees damages the trees' root systems and creates health issues for the trees. Over the next few months our landscapers will be removing all plantings from the bases of our trees. Please do not interfere with the landscapers. Please honor this process and help us preserve the beautiful trees that live in our Mutual.

MUTUAL ADMINISTRATION DIRECTOR'S REPORT

Ms. Hopkins presented her Mutual Administration activity report (attached).

Mrs. Damoci left the meeting at 10:09 a.m.

PRESIDENTS REPORT

President Gillon presented her report (attached).

UNFINISHED BUSINESS

The Board members discussed converting selected green parking zones to loading zones so that they cannot be used for long term parking. It was the consensus of the Board to prepare a list of areas to convert from green zones to yellow zones and to obtain paint costs.

Following a discussion, and upon a MOTION duly made by President Gillon and seconded by CFO Ferraro, it was

RESOLVED, to ratify amended/posted Policy 7020.12 – Approval of Escrows, Policy 7403.7 – Ceiling Fans, Policy 7495.12 – Bay and Other Window Construction and Frame Color, Policy 7549.12 – Lockout Procedures, and Policy 7622.12 – Mutual Repairs and Replacements.

The MOTION passed.

Following a discussion, and upon a MOTION duly made by President Gillon and seconded by CFO Ferraro, it was

RESOLVED, to ratify rescinded/posted Policy 7020 – Approval of Escrows.

The MOTION passed.

UNFINISHED BUSINESS (continued)

Following a discussion, and upon a MOTION duly made by CFO Ferraro and seconded by Secretary Sprague, it was

RESOLVED, that the Bylaws of Seal Beach Mutual No. Twelve have been reviewed for accuracy in the text and completeness to include all approved amendments from inception to the most current amendment dated June 13, 2013. Further, that the Board approves the document as corrected to include the addendum and pagination correction to be posted on the lwsb.com website and for its use by the Stock Transfer Office in providing Disclosure information.

The MOTION passed.

President Gillon called a break at 10:29 a.m. to 10:36 a.m.

Recording Secretary Day left on break at 10:29 a.m. to 10:44 a.m.

NEW BUSINESS

The Board members discussed amending Policy 7481.12 – Infrastructure Modifications. It was the consensus of the Board that further review is needed and no action will be taken at this time.

The Board members discussed amending Policy 7499.12 – HVAC Heat Pump. It was the consensus of the Board that further review is needed and no action will be taken at this time.

The Board members discussed amending Policy 7502.12 – Carport Regulations and Common Area Traffic Policy. It was the consensus of the Board that further review is needed and no action will be taken at this time.

The Board members discussed amending Policy 7502.12.1 – Parking Rules and Fines. It was the consensus of the Board to postpone action for further research.

Following further discussion, it was the consensus of the Board to schedule a Special Meeting to further discuss amending Policy 7502.12 – Carport Regulations and Common Area Traffic Policy and 7502.12.1 – Parking Rules and Fines.

The Board members discussed amending Policy 7507.12 – Electric Cart Pad. It was the consensus of the Board to postpone action for further research.

NEW BUSINESS (continued)

The Board members discussed rescinding Policy 7581.12 – Enforcement of Community Traffic Regulations (attached). Upon a MOTION duly made by President Gillon and seconded by Secretary Sprague, it was

RESOLVED, to rescind Policy 7581.12 – Enforcement of Community Traffic Regulations on a preliminary basis until the 30-day posting period is completed due to the fact that Policy 7502.12.1 – Adoption of GRF 1927-37 Fines for Parked Vehicles is the current policy for parking rules in the Mutual and because GRF has stated they will not enforce the traffic rules in GRF Policy 1920-37.

The MOTION passed with one abstention (Anderson).

Secretary Sprague discussed being prepared in the event of an emergency and the Great California Shakeout on October 19, at 10:19 a.m. (see attached).

The Board members discussed amending Policy 7510.12 – Eligibility Requirements. It was the consensus of the Board not to amend the policy at this time.

The Board discussed the David Rudge roofing RFQ package. It was the consensus of the Board to request that Mr. Rudge proceed with the roofing bid process.

The Board discussed the tree donation form and donations.

Following a discussion, and upon a MOTION duly made by President Gillon and seconded by Director Anderson, it was

RESOLVED, to hire Rappoport Consulting to act as Project Manager for the Mutual Twelve Sprinkler Rehabilitation project and to approve the contract with Rappoport Consulting in the amount of \$14,090.00 with a \$3,500.00 retainer to be paid at contract execution and the remaining work to be invoiced monthly with contract costs to be charged to the Infrastructure Reserves and authorize the President to sign the contract.

The MOTION passed.

CHIEF FINANCIAL OFFICER'S REPORT

Ms. Ferraro presented her financial report (attached).

DIRECTOR'S REMARKS

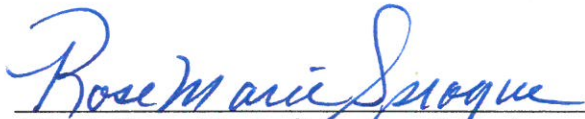
No Directors had remarks to make.

The following resolution was made in Executive Session concerning contract issues:

RESOLVED, the Board shall not, in the future, approve, allow, or authorize contractor KANG'S CONSTRUCTION, INC., California contractor license number 997910, their respective employees, sub-contractors, or any person associated with such entity to perform any modifications or alterations whatsoever to Association property wherever situated.

ADJOURNMENT

President Gillon adjourned the meeting at 12:03 p.m. and announced that an Executive Session would follow to discuss contract and member issues.



Attest, Rose Marie Sprague, Secretary
SEAL BEACH MUTUAL TWELVE
cd:9/26/17
Attachments

**NEXT MEETING: October 12, 2017, at 9:00 a.m.
in Administration Building, Conference Room A**

SPECIAL MEETING ANNOUNCEMENTS AND AGENDAS ARE POSTED IN LAUNDRY ROOM 57 (D SIDE). FOR INFORMAL INDIVIDUAL NOTICE OF SPECIAL MEETINGS, CONTACT SECRETARY SPRAGUE OR EMAIL PRESIDENT GILLON AT MARGARET.GILLON@MUTUAL12.ORG.

**RESOLUTIONS IN THE REGULAR
MONTHLY MEETING OF SEPTEMBER 14, 2017**

09/14/17 RESOLVED, to accept the 2018 Operating Budget for Mutual Twelve of \$1,237,396, resulting in a regular monthly Mutual assessment of \$228.13 per apartment per month, for an increase of \$4.61 per month over the total Mutual operating costs of 2017, as presented, and to adopt this budget forthwith.

RESOLVED, to ratify amended/posted Policy 7020.12 – Approval of Escrows, Policy 7403.7 – Ceiling Fans, Policy 7495.12 – Bay and Other Window Construction and Frame Color, Policy 7549.12 – Lockout Procedures, and Policy 7622.12 – Mutual Repairs and Replacements.

RESOLVED, to ratify rescinded/posted Policy 7020 – Approval of Escrows.

RESOLVED, that the Bylaws of Seal Beach Mutual No. Twelve have been reviewed for accuracy in the text and completeness to include all approved amendments from inception to the most current amendment dated June 13, 2013. Further, that the Board approves the document as corrected to include the addendum and pagination correction to be posted on the lwsb.com website and for its use by the Stock Transfer Office in providing Disclosure information.

RESOLVED, to rescind Policy 7581.12 – Enforcement of Community Traffic Regulations on a preliminary basis until the 30-day posting period is completed due to the fact that Policy 7502.12.1 – Adoption of GRF 1927-37 Fines for Parked Vehicles is the current policy for parking rules in the Mutual and because GRF has stated they will not enforce the traffic rules in GRF Policy 1920-37.

RESOLVED, to hire Rappoport Consulting to act as Project Manager for the Mutual Twelve Sprinkler Rehabilitation project and to approve the contract with Rappoport Consulting in the amount of \$14,090.00 with a \$3,500.00 retainer to be paid at contract execution and the remaining work to be invoiced monthly with contract costs to be charged to the Infrastructure Reserves and authorize the President to sign the contract.

RESOLVED, the Board shall not, in the future, approve, allow, or authorize contractor KANG'S CONSTRUCTION, INC., California contractor license number 997910, their respective employees, sub-contractors, or any person associated with such entity to perform any modifications or alterations whatsoever to Association property wherever situated.

**MINUTES OF THE SPECIAL MEETING OF THE BOARD OF DIRECTORS
SEAL BEACH MUTUAL NO. TWELVE
AUGUST 7, 2017**

DRAFT

CALL TO ORDER:

The Special Meeting of Seal Beach Mutual No. Twelve was called to order by President Gillon at 1:07 on Monday, August 7, 2017 in the Physical Property Conference Room.

ROLL CALL:

Those members present were: President Gillon, CFO Ferraro, Secretary Sprague, Director Anderson

Absent was: Vice President Carson

Also present: One Shareholder

The purpose of the meeting is to discuss Shareholder and Contractor issues.

Upon secret ballot the Board voted to seat Ms. Sharon Woodruff as a Director.

Following a discussion and on **MOTION** made by Secretary Sprague, and second by CFO Ferraro, it was:

RESOLVED, To appoint Sharon Woodruff as the Director assigned to Parcel 8.

The Motion passed.

Inspector Antisdal joined the meeting at 1:16.

Discussion on 39-F. Approval on window permit for 39-F is holding until Inspector Antisdal inspects the unit and clarifies the bid from the contractor.

Discussion on 77-E. The permit is being held until it is modified to conform to the mutual's policy limit on the number of doors in a unit.

Discussion on 75-C.

Following a discussion and on **MOTION** made by President Gillon and second by Director Anderson, it was:

RESOLVED, To approve the post installation flooring permit for unit 75-C and authorize the President to sign the permit.

The Motion passed.

**MINUTES OF THE SPECIAL MEETING OF THE BOARD OF DIRECTORS
SEAL BEACH MUTUAL NO. TWELVE
AUGUST 7, 2017**

DRAFT

Discussion on 68-E. The Board reviewed the work done on 68-E for the sewer repair and addressed the number of problems left behind by the contractor.

Discussion on Policy 7481.12 **Infrastructure Modifications.**

Following a discussion and on **MOTION** made by President Gillon and second by Director Anderson, it was:

RESOLVED, To waive the Policy 7481.12 **Infrastructure Modifications** threshold requirement pending amendment of the policy.

The Motion passed.

Inspector Andtisdell left the meeting at 2:03.

Discussion on non-contract sales orders from Pinnacle.

Following a discussion and on **MOTION** made by President Gillon and second by Director Anderson, it was:

RESOLVED, To pay Pinnacle non-contract sales orders for \$748.00 for buildings 62 & 63 rain bird pop ups, \$1153.00 for rain bird pop ups for building 70, 72, 73, & 9, and \$558.50 for rain bird pop ups for buildings 34, 36, 37, 41, 44, 39, & 43 to be charged to Landscape Extras, and authorize the President to sign the non-contract sales orders.

The Motion passed.

Discussion on laundry rooms GFCI upgrades. The Board will hold the proposal from Schlick Services until the Thursday August, 10, 2017 meeting. Director Anderson and Secretary Sprague will do further research.

The meeting adjourned to the Executive Session at 2:14

The Special Meeting was rejoined at 2:56.

**MINUTES OF THE SPECIAL MEETING OF THE BOARD OF DIRECTORS
SEAL BEACH MUTUAL NO. TWELVE
AUGUST 7, 2017**

DRAFT

Discussion on controller wires for the sprinkler system.

Following a discussion and on **MOTION** made by President Gillon and second by Director Anderson, it was:

RESOLVED, To accept the work order from Pinnacle dated August 1, 2017 in the amount of \$1340.00 to repair the controller wires to be charged to Landscape Extras and authorize the President to sign the work order.

The Motion passed.

Following a discussion and on **MOTION** made by President Gillon and second by Director Anderson, it was:

RESOLVED, To accept the carport rental agreement from 6-K to allow the shareholders in 8-C to use their carport.

The Motion passed.

Following a discussion and on **MOTION** made by President Gillon and second by Secretary Sprague, it was:

RESOLVED, To accept the carport rental agreement from 67-I to allow the shareholders in 67-D to use their carport.

The Motion passed.

Following a discussion and on **MOTION** made by President Gillon and second by Secretary Sprague, it was:

RESOLVED, To accept the carport rental agreement from 42-F to allow the shareholder in 42-K to use their carport.

The Motion passed.

Vice President Carson joined the meeting at 3:15.

MINUTES OF THE SPECIAL MEETING OF THE BOARD OF DIRECTORS
SEAL BEACH MUTUAL NO. TWELVE
AUGUST 7, 2017

DRAFT

The meeting was adjourned to the Executive Session at 3:34

ADJOURNMENT:

President Gillon adjourned the meeting at 3:34.

A handwritten signature in cursive script that reads "Rose Marie Sprague". The signature is written in black ink and is positioned above a solid horizontal line.

Attest:

Rose Marie Sprague, Secretary
SEAL BEACH MUTUAL NO. TWELVE
/RMS

MINUTES OF THE SPECIAL MEETING OF THE BOARD OF DIRECTORS
SEAL BEACH MUTUAL NO. TWELVE
AUGUST 14, 2017

DRAFT

CALL TO ORDER:

The Special Meeting of Seal Beach Mutual No. Twelve was called to order by President Gillon at 1:40 on Monday, August 14, 2017 in the Physical Property Conference Room.

ROLL CALL:

Those members present were: President Gillon, CFO Ferraro, Secretary Sprague, Director Anderson

Absent were: Vice President Carson, Director Woodruff

Also present: Three Shareholders

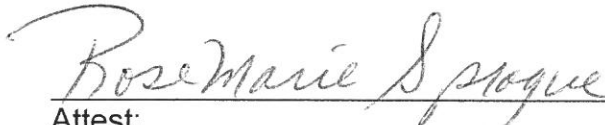
The purpose of the meeting is to review, make recommendations on and/or approve the Mutual No. Twelve 2018 Annual Budget.

CFO Ferraro gave a line by line explanation of the projected Mutual No. Twelve 2018 Annual Budget.

Following a discussion, it was the Consensus of the Board to submit the Mutual No. Twelve 2018 Annual Budget to the GRF Director of Finance for processing. CFO Ferraro will be meeting with the Director of Finance, Carolyn Miller, to review the proposed Budget.

ADJOURNMENT:

President Gillon adjourned the meeting at 2:53.



Attest:

Rose Marie Sprague, Secretary
SEAL BEACH MUTUAL NO. TWELVE
/RMS

Carole Damoci
Mutual 12 GRF Representative

Sept. 14th, 2017

The landscaping of the Globe area has started and should be finished by Oct. 1st. The hardscape has been finished and the palm trees should be in this week. Plants will follow. The Leisure World sign on the Security building will be removed and 2 monument signs near the street will be installed.

We started our Clubhouse revitalization program with Clubhouse 6. The painting, both inside and out, is going on this week. The air wall between the table tennis area and hospitably is in and the floors will be refinished starting in a week or so. That leaves LED lighting and window coverings. The clubhouse should reopen by the October 13th, in time for the Flu Clinic. Clubhouse 3 will start the beginning of 2018.

Demolition for the multi-purposes court and picnic area behind clubhouse 2 should start in a month or so.

We voted at last months GRF Board meeting to go out and get engineering plans to either update or replace the swimming pool and showers.

We're just finishing up phase 1 of our street paving project. Phase 2 will follow with the repaving of St. Andrews, south of Golden Rain Blvd to Seal Beach Blvd.

As always, if you have any questions concerning the Golden Rain Foundation, please feel free to contact me. I would love to hear from you and answer any of your questions I can. If I don't have your answers I will get them.

If your question is about the Mutual, please contact your Mutual 12 Director. Their phone numbers are listed on the bulletin boards in the laundry rooms.

Respectfully submitted,
Carole S. Damoci
GRF Vice-President
562-405-4965
cdamoci@lwsb.com

INSPECTOR MONTHLY MUTUAL REPORT

MUTUAL: **(12) TWELVE**

INSPECTOR: **Mark Harper**

MUTUAL BOARD MEETING DATE: **September 13, 2017**

Print Date: 9/13/2017

PERMIT ACTIVITY

| UNIT # | DESCRIPTION OF WORK | GRF/CITY PERMIT | START DATE | COMP. DATE | CHANGE ORDER | FINAL INSPECTION | CONTRACTOR / COMMENTS |
|-------------|----------------------------|-----------------|-----------------|-----------------|--------------|-----------------------|------------------------|
| 07-L | REMODEL | BOTH | 06/01/17 | 10/01/17 | NO | | AMORE DESIGN INC |
| 74A | Remodel | CITY | 02/15/17 | 07/16/17 | NO | | JC Kress Construction |
| 40-E | SHOWER INSTALLATION | BOTH | 04/02/17 | 07/30/17 | NO | 08/08/17 FINAL | LW DÉCOR |
| 34-D | FLOORING INSTALLATION | GRF | 09/01/17 | 10/01/17 | NO | | BIXBY PLAZA FLOORING |
| 34-F | REMODEL | BOTH | 09/11/17 | 10/31/17 | NO | | JOHN BERGKVIST |
| 38-K | SOLATUBE X 3 | BOTH | 07/24/17 | 09/25/17 | NO | | BRIGHTER CONCEPTS |
| 38-K | REMODEL | BOTH | 09/29/17 | 11/03/17 | NO | | BERGKVIST CONSTRUCTION |
| 39-F | WINDOWS INSTALLATION | BOTH | 08/11/17 | 09/12/17 | NO | | BROTHERS GLASS |
| 40-G | HVAC INSTALLATION | BOTH | 07/19/17 | 09/30/17 | NO | | ALPINE |
| 42-K | WALKWAY ENTRY | GRF | 07/24/17 | 08/25/17 | NO | | MJ JURADO |
| 43-H | FLOORING INSTALLATION | GRF | 07/17/17 | 08/17/17 | NO | | KARYS KARPET |
| 43-J | A/C HEAT PUMP INSTALL | BOTH | 09/18/17 | 10/18/17 | NO | | ALPINE |
| 44-A | ADD SEAT TO SHOWER | BOTH | 05/18/17 | 06/30/17 | NO | | NUKOTE |
| 44H | TEXTURE, PAINT INTERIOR | GRF | 08/15/17 | 10/15/17 | NO | | LW DÉCOR INC |
| 45-F | REMODEL | BOTH | 07/15/17 | 11/30/17 | NO | | LOS AL BUILDERS |
| 45-F | ASBESTOS ABATEMENT | BOTH | 06/26/17 | 07/26/17 | NO | | UNIVERSAL ABATEMENT |
| 45-F | FLOORING INSTALLATION | GRF | 09/01/17 | 10/01/17 | NO | | KARYS CARPETS |
| 47-B | FLOORING INSTALLATION | GRF | 09/18/17 | 10/18/17 | NO | | BIXBY PLAZA FLOORING |
| 47-D | FLOORING INSTALLATION | GRF | 09/25/17 | 10/25/17 | NO | | KARYS CARPETS |
| 58-B | CART PAD INSTLLATION | GRF | 06/26/17 | 07/26/17 | NO | | JOHNS LANDSCAPE CO |
| 64-E | REMODEL | BOTH | 10/07/17 | 02/07/18 | NO | | OGAN CONSTRUCTION |
| 65B | FRONT DOOR INSTLLATION | BOTH | 08/15/17 | 09/30/17 | NO | | LW DÉCOR INC |
| 66-E | SOLA TUBE INSTALLATION | BOTH | 09/04/17 | 10/04/17 | NO | | SOLATUBE HOMEDAYLIGHT |
| 68-E | REPLACE SEWER PIPE | BOTH | 07/31/17 | 08/18/17 | NO | CNP | OC PLUMBING |
| 68-L | FRONT DOOR INSTALLATIO | GRF | 07/27/17 | 08/30/17 | NO | | JC KRESS CONSTRUCTION |
| 70-A | WASHER DRYER INSTALL | BOTH | 06/25/17 | 09/15/17 | NO | CNP | AC&R CONSTRUCTION |
| 70-A | RECESSED LIGHTING | BOTH | 06/25/17 | 09/15/17 | NO | | AC&R CONSTRUCTION |
| 70-A | REMODEL | BOTH | 08/22/17 | 10/22/17 | NO | | AC&R CONSTRUCTION |
| 71-L | FLOORING INSTALLATION | GRF | 09/25/17 | 10/25/17 | NO | | BIXBY PLAZA FLOORING |
| 73-F | REMODEL | BOTH | 06/01/17 | 10/01/17 | YES | CNP | AMORE DESIGN INC |
| 73-F | REMODEL | BOTH | 06/01/17 | 10/01/17 | YES | | AMORE DESIGN INC |
| 74-A | REMODEL | BOTH | 02/15/17 | 07/16/17 | NO | | JC KRESS CONSTRUCTION |
| 78-C | REMODEL | BOTH | 10/30/17 | 12/01/17 | NO | | BERGKVIST CONSTRUCTION |
| 78-C | FLOORING INSTALLATION | GRF | 08/02/17 | 09/02/17 | NO | | KARYS KARPET |
| 78-D | WASHER DRYER INSTALLAT | BOTH | 06/01/17 | 06/30/17 | NO | | PEEK CONSTRUCTION |
| | | | | | | | |
| | | | | | | | |
| | | | | | | | |
| | | | | | | | |
| | | | | | | | |
| | | | | | | | |
| | | | | | | | |
| | | | | | | | |
| | | | | | | | |
| | DESCRIPTION OF WORK | GRF/CITY PERMIT | START DATE | COMP. DATE | CHANGE ORDER | RECENT INSPECTION | CONTRACTOR / COMMENTS |

CNP = Correction Notice Posted

Repipe

Completed
Contractor Issue: Pending

Unit Numbers in Bold = Plan Review Approved
 Unit Numbers Not in Bold = Plan Review in Progress

INSPECTOR MONTHLY MUTUAL REPORT

MUTUAL: (12) TWELVE)

INSPECTOR: **Mark Harper**

MUTUAL BOARD MEETING DATE: **September 13, 2017**

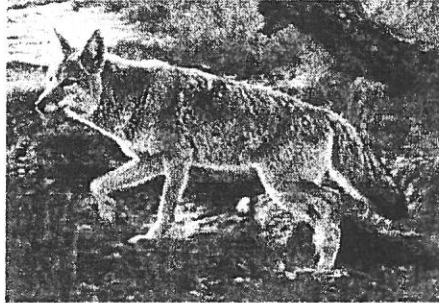
Print Date: 9/13/2017

| UNIT # | NMI | PLI | NBO | ESCROW | | ACTIVITY | | COE DATE | ROF |
|-----------------|-----------------------------------------|----------|----------|----------|----------|----------|-------|----------|-----|
| | | | | FI | FCOEI | FCOEI | FCOEI | | |
| 7-L | | 02/22/17 | | | | | | 03/29/17 | |
| 46H | | 01/18/17 | 02/10/17 | 02/14/17 | 02/28/17 | | | 03/01/17 | |
| 34-L | | 09/22/17 | | | | | | | |
| 35-C | | 02/15/17 | | | | | | | |
| 36-C | | 04/17/17 | 09/18/17 | | | | | | |
| 41-G | | 03/29/17 | 04/21/17 | 05/15/17 | 05/08/17 | | | 05/09/17 | |
| 45-E | | 03/30/17 | 06/13/17 | 06/26/17 | 06/27/17 | | | 06/21/17 | |
| 47-B | | 02/15/17 | | | | | | | |
| 47-G | | 08/18/17 | 08/29/17 | 09/13/17 | | | | | |
| 55-A | | 09/22/17 | | | | | | | |
| 58-E | 6/7/2017 | 08/11/88 | | | | | | | |
| 59-F | | | 09/11/17 | 09/13/17 | | | | | |
| 60-C | | 05/03/17 | | | | | | 07/24/17 | |
| 64-E | | 07/06/17 | 07/25/17 | 08/02/17 | 08/16/17 | | | | |
| 71-B | 8/2/2017 | | | | | | | | |
| 71-G | | 02/16/17 | | | | | | 08/25/17 | |
| 71-L | 8/4/2017 | | | | | | | | |
| 73-H | | 04/12/17 | | | | | | | |
| 73-L | | 05/31/17 | | | | | | 06/26/17 | |
| 74-C | | 06/14/17 | 09/18/17 | | | | | | |
| 75-C | | 04/14/17 | 05/10/17 | 05/17/17 | 06/01/17 | | | | |
| SOS | Sewer Line Repair and Re-lining Project | | | | | | | | |
| Andre Landscape | Tree Care & Maintenance | | | | | | | | |
| NA | Special Inspection | | | | | | | | |
| 61F | Plumbing Inspection | | | | | | | | |
| | | | | | | | | | |

Mutual Administration Director's Report

SEPTEMBER 2017

Coyote Safety



Coyotes in populated areas are typically less fearful of people. They have been known to attack pets and approach people too closely.

Coyotes are skilled hunters; we must be strong, motivated, and most importantly, **proactive**.

But what does being proactive mean?

- We must continue to haze the coyote. Do not turn your back and run. By running you are seen as prey.
- We must not feed wildlife. Bird feeders on your property will attract rats, squirrels, and rabbits which will attract coyotes to your home.
- We must keep food and trash off our patios.
- We must protect our pets.

Small pets can easily become coyote prey. Cats and small dogs **should never be allowed outside alone**. It's highly recommended that small pets always be accompanied by their owner and dogs must be on a 6 foot leash. Do not use a retractable leash. Your pet can get too far away from you with a retractable leash. One may want to see their dog scamper around on a long retractable leash, but that is only placing the pet in harm's way and is a violation of policy.

Long Beach Animal Care Services recommends calling them at (562) 570-7387 (PETS) to report all coyote sightings and to determine if an Animal Control Officer is needed. Sightings can also be reported online using the link below:

(http://www.longbeach.gov/acs/wildlife/living_with_urban_coyote.asp)

IF A COYOTE IS POSING AN IMMINENT THREAT TO LIFE, CALL 911.

President's Report

Margaret Gillon, September 14, 2017

PREPARING YOURSELF FOR AN EMERGENCY. Every October is the California Great Shake Out. This year the Shake Out is at 10:19 a.m. on October 19. This exercise reminds us that we must always be prepared for Emergencies. Please review the articles in this month's minutes and prepare yourself and your home for future emergency events.

ROOFING CONTRACTS ARE BEING BID. This month we are going out to bid so we are ready to start re-roofing in 2018. We will be doing eight buildings each year. A survey will be done by Physical Properties Department to find the roofs that need to be replaced first.

NEW TREES ARE ARRIVING. After some very hard work and many meetings of the Landscape Committee our arborist will be planting new trees in October. Thanks to Rose Marie Sprague and Tony Anderson for working with the arborist and the shareholders to select and place the new trees.

MUTUAL BUDGET BEING APPROVED. The Mutual Budget and Assessments are being approved this month. We will not know what the new Golden Rain Foundation (GRF) budget and assessments will be until GRF has their board meeting on September 26, 2017. Please remember your monthly assessment is the Total of the Mutual Twelve Assessments plus the Golden Rain Assessments.

AS SUMMER ENDS enjoy the cooler fall weather and the fall colors.

MUTUAL OPERATIONS**RESCIND POLICY****RESIDENT REGULATIONS****Enforcement of Community Traffic Regulations – Mutual Twelve Only****ENFORCEMENT ON TRUST AND GRF PROPERTY**

1. The Mutual Board respects the right and responsibility of the Golden Rain Foundation (GRF) to adopt and reasonably and equitably enforce all aspects of COMMUNITY OPERATIONS Policy 1920 – Traffic Rules and Regulations for all “Residents” and “Visitors” on any Trust property or property owned by the Golden Rain Foundation in its own name. Further, the Mutual welcomes GRF to follow individuals onto Mutual property to cite them for infractions that occur on GRF property as described above.
2. The Mutual Board would appreciate notification of but does not accept responsibility for infractions committed by Mutual Twelve shareholders and/or their “Visitors” that occur on GRF property.

ENFORCEMENT ON MUTUAL PROPERTY

1. The Mutual Board concurs with the Traffic Rules and Regulations as stated in GRF Policy 1920 adopted by the GRF April 15, 2008, with the following exceptions and amendments when vehicles are on property owned by the Mutual Corporation.
 - a. The Mutual appreciates notification of citations for infractions that occur within the Mutual. However, enforcement measures will be determined and carried out by the Mutual Board.
 - b. Section 7.3.1 – This Trust street parking with the flow of traffic requirement applies to Mutual Twelve parking around carport driveways.
 - c. Section 7.8 – In addition to monitoring and citing violations of Mutual Policy 7502.12, the Mutual requests citations for infractions described in Mutual Policies 7506 and 7506.1.

(May 13)

MUTUAL OPERATIONS

RESCIND POLICY

RESIDENT REGULATIONS

Enforcement of Community Traffic Regulations – Mutual Twelve Only

- d. GRF permitted RV parking described in Sections 7.12.1 and 7.12.2 is not permitted in the Mutual.
- e. Section 8.4.1 – Sidewalk and walkway use of gasoline-powered vehicles is not permitted in the Mutual with the same exceptions as Policy 1920, Section 8.4.1.
- f. The Mutual does not concur with GRF Policy 1920, Section 12.0 Towing Policy (see Policy 7582.12 – Towing Vehicles).

DRAFT

MUTUAL ADOPTION

TWELVE: 05-09-13

(May 13)

CFO REPORT REGULAR MEETING – September 14, 2017

The most current Financial Statement Recap for August 31, 2017 is attached for your review. Each member of the Board of Directors has received the full report for their review and comment.

The numbers: Cash in the Bank: \$375,300 (Operations)

Reserves:

| | |
|------------------|-------------------|
| Appliance | \$ 15,353 |
| Painting | \$ 61,341 |
| Roofing | \$1,622,575 |
| Infrastructure | \$ 994,242 |
| Emer/Contingency | <u>\$ 319,389</u> |

Total Reserves \$3,012,900

Reserve Commitments: \$ 618,610 (Contractual obligations-Payables for Copper re-pipe)

Shareholder Receivables \$ 3,134 (No account over \$1800)

Other Receivable \$ 8,100 (*Collectability in doubt)

Operating Income and Expense Notes:

Mutual Income \$ 26,826 Positive variance from Budget

Mutual Expenses: \$ 46 Negative variance from Budget

Mutual Excess Income: \$ 26,773 (Possible Overstatement by *\$8,100)

Water charges from the City of Seal Beach were discussed at the CFO Council meeting this month as the billings are trending up, partially from increased usage during hot summer months, and some increase may be due to the installation of a new water meter which is thought to be more accurate. PLEASE REMAIN FOCUSED ON CONSERVATION.

Respectfully submitted,



Susan Ferraro
Mutual 12 CFO

1012 Seal Beach Mutual No. Twelve
 Financial Statement Recap
 08/31/2017

P.O. Box 2069
 Seal Beach CA 90740

| Aug Actual | Aug Budget | | 2017 Y-T-D Actual | 2017 Y-T-D Budget |
|----------------|----------------|-------------------------------------------|----------------------|----------------------|
| 111,631 | 111,631 | Carrying Charges | 893,045 | 893,048 |
| 54,800 | 54,800 | Reserve Funding | 438,403 | 438,400 |
| 166,431 | 166,431 | Total Regular Assessments | 1,331,448 | 1,331,448 |
| 176 | 326 | Financial Income | 10,733 | 2,608 |
| 4,560 | 2,039 | Other Income | 35,014 | 16,312 |
| 4,736 | 2,365 | Total Other Income | 45,746 | 18,920 |
| 171,167 | 168,796 | Total Mutual Income | 1,377,194 | 1,350,368 |
| 65,400 | 65,400 | GRF Trust Maintenance Fee | 523,200 | 523,200 |
| 13,813 | 11,806 | Utilities | 89,290 | 94,448 |
| 4,817 | 1,619 | Professional Fees | 34,558 | 12,952 |
| 23,912 | 25,788 | Outside Services | 174,201 | 206,304 |
| 11,621 | 9,384 | Taxes & Insurance | 90,770 | 75,072 |
| 54,800 | 54,800 | Contributions to Reserves | 438,403 | 438,400 |
| 174,363 | 168,797 | Total Expenses Before Off-Budget | 1,350,422 | 1,350,376 |
| (3,196) | (1) | Excess Inc/(Exp) Before Off-Budget | 26,773 | (8) |
| 3,566 | 0 | Depreciation Expense | 19,822 | 0 |
| (6,762) | (1) | Excess Inc/(Exp) After Off-Budget | 6,951 | (8) |
| | | Restricted Reserves | | |
| (195) | 0 | Appliance Reserve Equity | 15,353 | 0 |
| 2,500 | 0 | Painting Reserve | 61,341 | 0 |
| 40,695 | 0 | Roofing Reserve | 1,521,646 | 0 |
| 0 | 0 | Emergency Reserve Equity | 319,389 | 0 |
| (21,016) | 0 | Infrastructure Reserve | 476,561 | 0 |
| 21,984 | 0 | Total Restricted Reserves | 2,394,289 | 0 |

It is that time of the year once again when we are reminding all Shareholders to ask themselves, **“Am I prepared in the event of an emergency?”** Please take the time to inventory your emergency supplies. Do you have food, water, and medication to sustain yourself if an emergency occurs? Please remember to prepare for your pets. When is the last time you tried to use your flashlight? Have you prepared a Go-Pack with needed supplies? If you don't know where to start, please review the list on the Mutual 12 website under Emergency Preparedness. If you prefer not to create a Go-Pack yourself, you can purchase different Go-Packs from the Seal Beach Auxiliary Police. There will be an order form attached to the monthly minutes for your convenience.

Please do not become complacent. Emergencies can happen at any time. The experts say that you should have on hand supplies for a minimum of 3 days but should be prepared for up to 3 weeks or more. The Police and Fire department will not be able to respond right away. The roadways may not be passable. Government and other agencies may not be responding for some time. Your Mutual can not take care of you. We cannot stock food or water supplies for 452 buildings.

Please take action today! Your wellbeing can depend on your preparations.

Respectfully submitted,

Gary Sprague, Mutual Twelve CERT Manager

CALIFORNIA SHAKE-OUT 2017

ON OCTOBER 19, 2017 AT 10:19 A.M. WE WILL BEGIN THE EMERGENCY DRILL.

ALL SHAREHOLDERS SHOULD STAY IN THEIR HOMES AND PRACTICE THEIR PLAN WHICH THEY HAVE ESTABLISHED IN PREPARATION OF AN EMERGENCY. THIS IS A GOOD TIME TO CHECK YOUR GO-BAG OR EMERGENCY SUPPLIES.

BUILDING CAPTAINS WHO WISH TO PROCEED TO THE EMERGENCY SHED AT LAUNDRY ROOM 57 ARE WELCOME.

ALL DIRECTORS SHOULD TURN ON YOUR RADIOS. A RADIO CHECK TO THE COMMAND CENTER WILL BE DONE. ONCE THE RADIO CHECK IS ESTABLISHED PLEASE PROCEED TO THE COMMAND CENTER. CERT MANAGER, GARY SPRAGUE, WILL DEMONSTRATE HOW TO USE THE MUTUAL'S GENERATORS AND ATTACHMENTS. AN INVENTORY OF DIRECTOR SUPPLIES WILL ALSO BE DONE.

Seal Beach Police Volunteers Association, Inc.

Tax ID # 45-2572217



911 Seal Beach Blvd.
Seal Beach, CA 90740

For 1 person, For 2

For 1 person, For 2

| | | | | | | | | | | | | | | | | | | | | | | | | | | | | | | | | | | | | | | | | | | | | | | | | | | | | | | | | | | | | | | | | | | | | | | | | | | | | | | | | | | | | | | | | | | | | | | | | | | | | | | | | | | | | | | | | | | | | | | | | | | | | | | | | | | | | | | | | | | | | | | | | | |
|--------------------------------------------------------------------------------------------------------------------------------------------------------------------------------------------------------------------------------------------------------------------------------------------------------------------------------------------------------------------------------------------------------------------------------------------------------------------------------------------------------------------------------------------------------------------------------------------------------------------------------------------------------------------------------------------------------------------------------------------------------------------------------------------------------------------------------------------------------------------------------------------------------------------------------------------------------------------------------------------------------------------------------------------------------------------------------------------------------------------------------------------------------------------------------------------------------------------------------------------------------------------------------------------------------------------------------------------------------------------------------------------------------------------------------------------------------------------------------------------------------------------------------------------------------------------------------------------------------------------------------------------------------------------------------------------------------------------------------------------------------------------------------------------------------------------------------------------------------------------------------------------------------------------------------------------------------------------------------------------------------------------------------------------------------------------------------------------------------------------------------------------------------------------------------------------------------------------------------------------------------------------------------------------------------------------------------------------------------------------------------------------------------------------------------------------------------------------------------------------------------------------------------------------------------------------------------------------------------------|-----------------------------------------------------------------|--|------------------------------------------------------|--|------------------------------------|--|-----------------------------------------------------|--|-------------------------------------------------------|--|-----------------------|--|------------|--|---------------------------------------------------------------------------------|--|----------------------------|--|------------------------------------|--|-----------------------------------------------------|--|-------------------------------------------------------|--|---------------------------------|--|----------------------------|--|-------------|--|----------------------------------------------------------------------------|--|----------------------------|--|------------------------------------|--|-----------------------------------------------------|--|-------------------------------------------------------|--|-----------------------|--|---------------------------------------|--|--------------------------|--|-------------|--|----------|--|----------------------------------------|--|-----------------|--|----------------------|--|------------------------------|--|------------------------------------------------|--|-----------------------------|--|---------------------------------------|--|-----------------|--|--------------------------------------------------------------------------------------|--|------------------------------------------------------------------------------------------------|--|-----------------------------------------------------------------------------------------------------------------------------------------------------------------------------------------------------------------------------------------------------------------------------------------------------------------------------------------------------------------------------------------------------------------------------------------------------------------------------------------------------------------------------------------------------------------------------------------------------------------------------------------------------------------------------------------------------------------------------------------------------------------------------------------------------------------------------------------------------------------------------------------------------------------------------------------------------------------------------------------------------------------------------------------------------------------------------------------------------------------------------------------------------------------------------------------------------------------------------------------------------------------------------------------------------------------------------------------------------------------------------------------------------------------------------------------------------------------------------------------------------------------------------------------------------------------------------------------------------------------------------------------------------------------------------------------------------------------------------------------------------------------------------------------------------------------------------------------------------------------------------------------------------------------------------------------------------------------------------------------------------------------------------------------------------------------------------------------------------------------------------------------------------------------------------------------------------------------------------------------------------------------------------------------------------------------------------------------------------------------------------------------------------------------------------------------------------------------------------------------------------------------------------------------------------------------------------------------------------------------------------------------|----------------------------------------------------------------------------------|--|------------------------------------|--|------------------------------------|--|--------------------------------|--|------------------------------|--|------------------------|--|------------------------|--|-------------------------------------|--|--------------------------------|--|----------------|--|---------------|--|--------------------|--|-------------------------|--|-----------------------------------|--|---------------------------------------|--|--------------------|--|---------------------|--|-------------|--|------------------------------|--|---------------------|--|--------------------------|--|---------------------------|--|-------------|--|--------------------------------------------------------------------------------------------|--|--------------------------------------------|--|--------|--|--------|--|------------------------|--|--------------------|--|---------------------------|--|----------------------------------------------------------------------|--|---------------------------------------------------------------------------------------------|--|------------------------------------------------------------------|--|-------------------|------------------|--|-------------------|--|-------------------|---------------------------------------------------------------------------------------------------|--|
| <table border="1" style="width: 100%; border-collapse: collapse;"> <tr> <td colspan="2">Grab & Go Survival Kit, 1 kit for \$10 or 2 for \$15</td> </tr> <tr> <td>1 Nylon-Water Resistant Kit, 6-pack size soft cooler</td> <td></td> </tr> <tr> <td>6 Pouches of Water, 4.225 oz. each</td> <td></td> </tr> <tr> <td>1 2400 Calorie Apple Cinnamon Ration (3-day supply)</td> <td></td> </tr> <tr> <td>1 Solar Blanket, 84" X 52" (retains 90% of body heat)</td> <td></td> </tr> <tr> <td>1 12-hour Light Stick</td> <td></td> </tr> <tr> <td>3 Wet naps</td> <td></td> </tr> <tr> <td colspan="2">Minimum Grab & Go Bag \$35 \$45</td> </tr> <tr> <td>1 Water-Resistant Backpack</td> <td></td> </tr> <tr> <td>6 Pouches of Water, 4.225 oz. each</td> <td></td> </tr> <tr> <td>1 2400 Calorie Apple Cinnamon Ration (3-day supply)</td> <td></td> </tr> <tr> <td>1 Solar Blanket, 84" X 52" (retains 90% of body heat)</td> <td></td> </tr> <tr> <td>1 AM/FM Dynamo Radio/Flashlight</td> <td></td> </tr> <tr> <td>1 First Aid Kit, 54 pieces</td> <td></td> </tr> <tr> <td>1 Dust Mask</td> <td></td> </tr> <tr> <td colspan="2">Deluxe Emergency Kit \$65 \$75</td> </tr> <tr> <td>1 Water-Resistant Backpack</td> <td></td> </tr> <tr> <td>6 Pouches of Water, 4.225 oz. each</td> <td></td> </tr> <tr> <td>1 2400 Calorie Apple Cinnamon Ration (3-day supply)</td> <td></td> </tr> <tr> <td>1 Solar Blanket, 84" X 52" (retains 90% of body heat)</td> <td></td> </tr> <tr> <td>1 12-hour Light Stick</td> <td></td> </tr> <tr> <td>1 AM/FM Portable Radio with batteries</td> <td></td> </tr> <tr> <td>1 54-Piece First Aid Kit</td> <td></td> </tr> <tr> <td>1 Dust Mask</td> <td></td> </tr> <tr> <td>1 Poncho</td> <td></td> </tr> <tr> <td>1 Flashlight with 2 alkaline batteries</td> <td></td> </tr> <tr> <td>1 2-Person Tent</td> <td></td> </tr> <tr> <td>1 50 Foot Nylon Rope</td> <td></td> </tr> <tr> <td>1 pair Leather-Palmed Gloves</td> <td></td> </tr> <tr> <td>1 pkg Water Purification Tablets (50 per pack)</td> <td></td> </tr> <tr> <td>1 Camper Stove with Candles</td> <td></td> </tr> <tr> <td>1 box Waterproof Matches (50 per box)</td> <td></td> </tr> <tr> <td>1 Utility Knife</td> <td></td> </tr> <tr> <td colspan="2">38-Piece "Dog or Cat Gonelt", per kit \$50</td> </tr> <tr> <td colspan="2">Buckets for dogs or cats contain food water, dishes, collar and leash, toys, and plastic bags.</td> </tr> </table> | Grab & Go Survival Kit, 1 kit for \$10 or 2 for \$15 | | 1 Nylon-Water Resistant Kit, 6-pack size soft cooler | | 6 Pouches of Water, 4.225 oz. each | | 1 2400 Calorie Apple Cinnamon Ration (3-day supply) | | 1 Solar Blanket, 84" X 52" (retains 90% of body heat) | | 1 12-hour Light Stick | | 3 Wet naps | | Minimum Grab & Go Bag \$35 \$45 | | 1 Water-Resistant Backpack | | 6 Pouches of Water, 4.225 oz. each | | 1 2400 Calorie Apple Cinnamon Ration (3-day supply) | | 1 Solar Blanket, 84" X 52" (retains 90% of body heat) | | 1 AM/FM Dynamo Radio/Flashlight | | 1 First Aid Kit, 54 pieces | | 1 Dust Mask | | Deluxe Emergency Kit \$65 \$75 | | 1 Water-Resistant Backpack | | 6 Pouches of Water, 4.225 oz. each | | 1 2400 Calorie Apple Cinnamon Ration (3-day supply) | | 1 Solar Blanket, 84" X 52" (retains 90% of body heat) | | 1 12-hour Light Stick | | 1 AM/FM Portable Radio with batteries | | 1 54-Piece First Aid Kit | | 1 Dust Mask | | 1 Poncho | | 1 Flashlight with 2 alkaline batteries | | 1 2-Person Tent | | 1 50 Foot Nylon Rope | | 1 pair Leather-Palmed Gloves | | 1 pkg Water Purification Tablets (50 per pack) | | 1 Camper Stove with Candles | | 1 box Waterproof Matches (50 per box) | | 1 Utility Knife | | 38-Piece "Dog or Cat Gonelt", per kit \$50 | | Buckets for dogs or cats contain food water, dishes, collar and leash, toys, and plastic bags. | | <table border="1" style="width: 100%; border-collapse: collapse;"> <tr> <td colspan="2">Roll & Go Survival Kit \$85 \$90</td> </tr> <tr> <td>1 Wheeled Water Resistant Backpack</td> <td></td> </tr> <tr> <td>6 Pouches of Water, 4.225 oz. each</td> <td></td> </tr> <tr> <td>1 3600 Calorie Mayday Food Bar</td> <td></td> </tr> <tr> <td>1 Large MayDay Solar Blanket</td> <td></td> </tr> <tr> <td>2 12-hour Light Sticks</td> <td></td> </tr> <tr> <td>2 pkg Wet naps, 3-pack</td> <td></td> </tr> <tr> <td>1 Dynamo FM Radio w/ LED Flashlight</td> <td></td> </tr> <tr> <td>1 Bloodstopper Trauma Dressing</td> <td></td> </tr> <tr> <td>1 Adult Poncho</td> <td></td> </tr> <tr> <td>1 Yellow Rope</td> <td></td> </tr> <tr> <td>1 pair Work Gloves</td> <td></td> </tr> <tr> <td>1 Personal Water Filter</td> <td></td> </tr> <tr> <td>1 box Slow-Burn Emergency Candles</td> <td></td> </tr> <tr> <td>1 box Waterproof Matches (50 per box)</td> <td></td> </tr> <tr> <td>1 Spoon/Fork Combo</td> <td></td> </tr> <tr> <td>1 Vegetable Lasagna</td> <td></td> </tr> <tr> <td>2 Maxi-pads</td> <td></td> </tr> <tr> <td>1 Clear-Solution Hygiene Kit</td> <td></td> </tr> <tr> <td>2 pkg Pocket Tissue</td> <td></td> </tr> <tr> <td>1 Wag Bag Sanitation Kit</td> <td></td> </tr> <tr> <td>2 Anti-bacterial Bar Soap</td> <td></td> </tr> <tr> <td>1 Blue Tarp</td> <td></td> </tr> <tr> <td colspan="2">Deluxe Emergency Honey Bucket Kits, per kit \$85</td> </tr> <tr> <td colspan="2">In Addition to Food, Water, Blankets, etc:</td> </tr> <tr> <td colspan="2">Toilet</td> </tr> <tr> <td colspan="2">Liners</td> </tr> <tr> <td colspan="2">Chemical disinfectants</td> </tr> <tr> <td colspan="2">Duct Tape, 10 yds.</td> </tr> <tr> <td colspan="2">Gas & Water Shut-off Tool</td> </tr> <tr> <td colspan="2">Water Heater Adapters \$10</td> </tr> <tr> <td colspan="2">Water Pouches, 6-pack in a Drinking Container \$5</td> </tr> <tr> <td colspan="2">Hand Warmers, pair \$3</td> </tr> <tr> <td>Food Bars:</td> <td style="text-align: right;">400 Calories \$2</td> </tr> <tr> <td></td> <td style="text-align: right;">1200 Calories \$4</td> </tr> <tr> <td></td> <td style="text-align: right;">2400 Calories \$5</td> </tr> <tr> <td colspan="2">c/77-nu Solar/Dynamo Radio/Flashlight/Cell Charger \$30</td> </tr> </table> | Roll & Go Survival Kit \$85 \$90 | | 1 Wheeled Water Resistant Backpack | | 6 Pouches of Water, 4.225 oz. each | | 1 3600 Calorie Mayday Food Bar | | 1 Large MayDay Solar Blanket | | 2 12-hour Light Sticks | | 2 pkg Wet naps, 3-pack | | 1 Dynamo FM Radio w/ LED Flashlight | | 1 Bloodstopper Trauma Dressing | | 1 Adult Poncho | | 1 Yellow Rope | | 1 pair Work Gloves | | 1 Personal Water Filter | | 1 box Slow-Burn Emergency Candles | | 1 box Waterproof Matches (50 per box) | | 1 Spoon/Fork Combo | | 1 Vegetable Lasagna | | 2 Maxi-pads | | 1 Clear-Solution Hygiene Kit | | 2 pkg Pocket Tissue | | 1 Wag Bag Sanitation Kit | | 2 Anti-bacterial Bar Soap | | 1 Blue Tarp | | Deluxe Emergency Honey Bucket Kits, per kit \$85 | | In Addition to Food, Water, Blankets, etc: | | Toilet | | Liners | | Chemical disinfectants | | Duct Tape, 10 yds. | | Gas & Water Shut-off Tool | | Water Heater Adapters \$10 | | Water Pouches, 6-pack in a Drinking Container \$5 | | Hand Warmers, pair \$3 | | Food Bars: | 400 Calories \$2 | | 1200 Calories \$4 | | 2400 Calories \$5 | c/77-nu Solar/Dynamo Radio/Flashlight/Cell Charger \$30 | |
| Grab & Go Survival Kit, 1 kit for \$10 or 2 for \$15 | | | | | | | | | | | | | | | | | | | | | | | | | | | | | | | | | | | | | | | | | | | | | | | | | | | | | | | | | | | | | | | | | | | | | | | | | | | | | | | | | | | | | | | | | | | | | | | | | | | | | | | | | | | | | | | | | | | | | | | | | | | | | | | | | | | | | | | | | | | | | | | | | |
| 1 Nylon-Water Resistant Kit, 6-pack size soft cooler | | | | | | | | | | | | | | | | | | | | | | | | | | | | | | | | | | | | | | | | | | | | | | | | | | | | | | | | | | | | | | | | | | | | | | | | | | | | | | | | | | | | | | | | | | | | | | | | | | | | | | | | | | | | | | | | | | | | | | | | | | | | | | | | | | | | | | | | | | | | | | | | | |
| 6 Pouches of Water, 4.225 oz. each | | | | | | | | | | | | | | | | | | | | | | | | | | | | | | | | | | | | | | | | | | | | | | | | | | | | | | | | | | | | | | | | | | | | | | | | | | | | | | | | | | | | | | | | | | | | | | | | | | | | | | | | | | | | | | | | | | | | | | | | | | | | | | | | | | | | | | | | | | | | | | | | | |
| 1 2400 Calorie Apple Cinnamon Ration (3-day supply) | | | | | | | | | | | | | | | | | | | | | | | | | | | | | | | | | | | | | | | | | | | | | | | | | | | | | | | | | | | | | | | | | | | | | | | | | | | | | | | | | | | | | | | | | | | | | | | | | | | | | | | | | | | | | | | | | | | | | | | | | | | | | | | | | | | | | | | | | | | | | | | | | |
| 1 Solar Blanket, 84" X 52" (retains 90% of body heat) | | | | | | | | | | | | | | | | | | | | | | | | | | | | | | | | | | | | | | | | | | | | | | | | | | | | | | | | | | | | | | | | | | | | | | | | | | | | | | | | | | | | | | | | | | | | | | | | | | | | | | | | | | | | | | | | | | | | | | | | | | | | | | | | | | | | | | | | | | | | | | | | | |
| 1 12-hour Light Stick | | | | | | | | | | | | | | | | | | | | | | | | | | | | | | | | | | | | | | | | | | | | | | | | | | | | | | | | | | | | | | | | | | | | | | | | | | | | | | | | | | | | | | | | | | | | | | | | | | | | | | | | | | | | | | | | | | | | | | | | | | | | | | | | | | | | | | | | | | | | | | | | | |
| 3 Wet naps | | | | | | | | | | | | | | | | | | | | | | | | | | | | | | | | | | | | | | | | | | | | | | | | | | | | | | | | | | | | | | | | | | | | | | | | | | | | | | | | | | | | | | | | | | | | | | | | | | | | | | | | | | | | | | | | | | | | | | | | | | | | | | | | | | | | | | | | | | | | | | | | | |
| Minimum Grab & Go Bag \$35 \$45 | | | | | | | | | | | | | | | | | | | | | | | | | | | | | | | | | | | | | | | | | | | | | | | | | | | | | | | | | | | | | | | | | | | | | | | | | | | | | | | | | | | | | | | | | | | | | | | | | | | | | | | | | | | | | | | | | | | | | | | | | | | | | | | | | | | | | | | | | | | | | | | | | |
| 1 Water-Resistant Backpack | | | | | | | | | | | | | | | | | | | | | | | | | | | | | | | | | | | | | | | | | | | | | | | | | | | | | | | | | | | | | | | | | | | | | | | | | | | | | | | | | | | | | | | | | | | | | | | | | | | | | | | | | | | | | | | | | | | | | | | | | | | | | | | | | | | | | | | | | | | | | | | | | |
| 6 Pouches of Water, 4.225 oz. each | | | | | | | | | | | | | | | | | | | | | | | | | | | | | | | | | | | | | | | | | | | | | | | | | | | | | | | | | | | | | | | | | | | | | | | | | | | | | | | | | | | | | | | | | | | | | | | | | | | | | | | | | | | | | | | | | | | | | | | | | | | | | | | | | | | | | | | | | | | | | | | | | |
| 1 2400 Calorie Apple Cinnamon Ration (3-day supply) | | | | | | | | | | | | | | | | | | | | | | | | | | | | | | | | | | | | | | | | | | | | | | | | | | | | | | | | | | | | | | | | | | | | | | | | | | | | | | | | | | | | | | | | | | | | | | | | | | | | | | | | | | | | | | | | | | | | | | | | | | | | | | | | | | | | | | | | | | | | | | | | | |
| 1 Solar Blanket, 84" X 52" (retains 90% of body heat) | | | | | | | | | | | | | | | | | | | | | | | | | | | | | | | | | | | | | | | | | | | | | | | | | | | | | | | | | | | | | | | | | | | | | | | | | | | | | | | | | | | | | | | | | | | | | | | | | | | | | | | | | | | | | | | | | | | | | | | | | | | | | | | | | | | | | | | | | | | | | | | | | |
| 1 AM/FM Dynamo Radio/Flashlight | | | | | | | | | | | | | | | | | | | | | | | | | | | | | | | | | | | | | | | | | | | | | | | | | | | | | | | | | | | | | | | | | | | | | | | | | | | | | | | | | | | | | | | | | | | | | | | | | | | | | | | | | | | | | | | | | | | | | | | | | | | | | | | | | | | | | | | | | | | | | | | | | |
| 1 First Aid Kit, 54 pieces | | | | | | | | | | | | | | | | | | | | | | | | | | | | | | | | | | | | | | | | | | | | | | | | | | | | | | | | | | | | | | | | | | | | | | | | | | | | | | | | | | | | | | | | | | | | | | | | | | | | | | | | | | | | | | | | | | | | | | | | | | | | | | | | | | | | | | | | | | | | | | | | | |
| 1 Dust Mask | | | | | | | | | | | | | | | | | | | | | | | | | | | | | | | | | | | | | | | | | | | | | | | | | | | | | | | | | | | | | | | | | | | | | | | | | | | | | | | | | | | | | | | | | | | | | | | | | | | | | | | | | | | | | | | | | | | | | | | | | | | | | | | | | | | | | | | | | | | | | | | | | |
| Deluxe Emergency Kit \$65 \$75 | | | | | | | | | | | | | | | | | | | | | | | | | | | | | | | | | | | | | | | | | | | | | | | | | | | | | | | | | | | | | | | | | | | | | | | | | | | | | | | | | | | | | | | | | | | | | | | | | | | | | | | | | | | | | | | | | | | | | | | | | | | | | | | | | | | | | | | | | | | | | | | | | |
| 1 Water-Resistant Backpack | | | | | | | | | | | | | | | | | | | | | | | | | | | | | | | | | | | | | | | | | | | | | | | | | | | | | | | | | | | | | | | | | | | | | | | | | | | | | | | | | | | | | | | | | | | | | | | | | | | | | | | | | | | | | | | | | | | | | | | | | | | | | | | | | | | | | | | | | | | | | | | | | |
| 6 Pouches of Water, 4.225 oz. each | | | | | | | | | | | | | | | | | | | | | | | | | | | | | | | | | | | | | | | | | | | | | | | | | | | | | | | | | | | | | | | | | | | | | | | | | | | | | | | | | | | | | | | | | | | | | | | | | | | | | | | | | | | | | | | | | | | | | | | | | | | | | | | | | | | | | | | | | | | | | | | | | |
| 1 2400 Calorie Apple Cinnamon Ration (3-day supply) | | | | | | | | | | | | | | | | | | | | | | | | | | | | | | | | | | | | | | | | | | | | | | | | | | | | | | | | | | | | | | | | | | | | | | | | | | | | | | | | | | | | | | | | | | | | | | | | | | | | | | | | | | | | | | | | | | | | | | | | | | | | | | | | | | | | | | | | | | | | | | | | | |
| 1 Solar Blanket, 84" X 52" (retains 90% of body heat) | | | | | | | | | | | | | | | | | | | | | | | | | | | | | | | | | | | | | | | | | | | | | | | | | | | | | | | | | | | | | | | | | | | | | | | | | | | | | | | | | | | | | | | | | | | | | | | | | | | | | | | | | | | | | | | | | | | | | | | | | | | | | | | | | | | | | | | | | | | | | | | | | |
| 1 12-hour Light Stick | | | | | | | | | | | | | | | | | | | | | | | | | | | | | | | | | | | | | | | | | | | | | | | | | | | | | | | | | | | | | | | | | | | | | | | | | | | | | | | | | | | | | | | | | | | | | | | | | | | | | | | | | | | | | | | | | | | | | | | | | | | | | | | | | | | | | | | | | | | | | | | | | |
| 1 AM/FM Portable Radio with batteries | | | | | | | | | | | | | | | | | | | | | | | | | | | | | | | | | | | | | | | | | | | | | | | | | | | | | | | | | | | | | | | | | | | | | | | | | | | | | | | | | | | | | | | | | | | | | | | | | | | | | | | | | | | | | | | | | | | | | | | | | | | | | | | | | | | | | | | | | | | | | | | | | |
| 1 54-Piece First Aid Kit | | | | | | | | | | | | | | | | | | | | | | | | | | | | | | | | | | | | | | | | | | | | | | | | | | | | | | | | | | | | | | | | | | | | | | | | | | | | | | | | | | | | | | | | | | | | | | | | | | | | | | | | | | | | | | | | | | | | | | | | | | | | | | | | | | | | | | | | | | | | | | | | | |
| 1 Dust Mask | | | | | | | | | | | | | | | | | | | | | | | | | | | | | | | | | | | | | | | | | | | | | | | | | | | | | | | | | | | | | | | | | | | | | | | | | | | | | | | | | | | | | | | | | | | | | | | | | | | | | | | | | | | | | | | | | | | | | | | | | | | | | | | | | | | | | | | | | | | | | | | | | |
| 1 Poncho | | | | | | | | | | | | | | | | | | | | | | | | | | | | | | | | | | | | | | | | | | | | | | | | | | | | | | | | | | | | | | | | | | | | | | | | | | | | | | | | | | | | | | | | | | | | | | | | | | | | | | | | | | | | | | | | | | | | | | | | | | | | | | | | | | | | | | | | | | | | | | | | | |
| 1 Flashlight with 2 alkaline batteries | | | | | | | | | | | | | | | | | | | | | | | | | | | | | | | | | | | | | | | | | | | | | | | | | | | | | | | | | | | | | | | | | | | | | | | | | | | | | | | | | | | | | | | | | | | | | | | | | | | | | | | | | | | | | | | | | | | | | | | | | | | | | | | | | | | | | | | | | | | | | | | | | |
| 1 2-Person Tent | | | | | | | | | | | | | | | | | | | | | | | | | | | | | | | | | | | | | | | | | | | | | | | | | | | | | | | | | | | | | | | | | | | | | | | | | | | | | | | | | | | | | | | | | | | | | | | | | | | | | | | | | | | | | | | | | | | | | | | | | | | | | | | | | | | | | | | | | | | | | | | | | |
| 1 50 Foot Nylon Rope | | | | | | | | | | | | | | | | | | | | | | | | | | | | | | | | | | | | | | | | | | | | | | | | | | | | | | | | | | | | | | | | | | | | | | | | | | | | | | | | | | | | | | | | | | | | | | | | | | | | | | | | | | | | | | | | | | | | | | | | | | | | | | | | | | | | | | | | | | | | | | | | | |
| 1 pair Leather-Palmed Gloves | | | | | | | | | | | | | | | | | | | | | | | | | | | | | | | | | | | | | | | | | | | | | | | | | | | | | | | | | | | | | | | | | | | | | | | | | | | | | | | | | | | | | | | | | | | | | | | | | | | | | | | | | | | | | | | | | | | | | | | | | | | | | | | | | | | | | | | | | | | | | | | | | |
| 1 pkg Water Purification Tablets (50 per pack) | | | | | | | | | | | | | | | | | | | | | | | | | | | | | | | | | | | | | | | | | | | | | | | | | | | | | | | | | | | | | | | | | | | | | | | | | | | | | | | | | | | | | | | | | | | | | | | | | | | | | | | | | | | | | | | | | | | | | | | | | | | | | | | | | | | | | | | | | | | | | | | | | |
| 1 Camper Stove with Candles | | | | | | | | | | | | | | | | | | | | | | | | | | | | | | | | | | | | | | | | | | | | | | | | | | | | | | | | | | | | | | | | | | | | | | | | | | | | | | | | | | | | | | | | | | | | | | | | | | | | | | | | | | | | | | | | | | | | | | | | | | | | | | | | | | | | | | | | | | | | | | | | | |
| 1 box Waterproof Matches (50 per box) | | | | | | | | | | | | | | | | | | | | | | | | | | | | | | | | | | | | | | | | | | | | | | | | | | | | | | | | | | | | | | | | | | | | | | | | | | | | | | | | | | | | | | | | | | | | | | | | | | | | | | | | | | | | | | | | | | | | | | | | | | | | | | | | | | | | | | | | | | | | | | | | | |
| 1 Utility Knife | | | | | | | | | | | | | | | | | | | | | | | | | | | | | | | | | | | | | | | | | | | | | | | | | | | | | | | | | | | | | | | | | | | | | | | | | | | | | | | | | | | | | | | | | | | | | | | | | | | | | | | | | | | | | | | | | | | | | | | | | | | | | | | | | | | | | | | | | | | | | | | | | |
| 38-Piece "Dog or Cat Gonelt", per kit \$50 | | | | | | | | | | | | | | | | | | | | | | | | | | | | | | | | | | | | | | | | | | | | | | | | | | | | | | | | | | | | | | | | | | | | | | | | | | | | | | | | | | | | | | | | | | | | | | | | | | | | | | | | | | | | | | | | | | | | | | | | | | | | | | | | | | | | | | | | | | | | | | | | | |
| Buckets for dogs or cats contain food water, dishes, collar and leash, toys, and plastic bags. | | | | | | | | | | | | | | | | | | | | | | | | | | | | | | | | | | | | | | | | | | | | | | | | | | | | | | | | | | | | | | | | | | | | | | | | | | | | | | | | | | | | | | | | | | | | | | | | | | | | | | | | | | | | | | | | | | | | | | | | | | | | | | | | | | | | | | | | | | | | | | | | | |
| Roll & Go Survival Kit \$85 \$90 | | | | | | | | | | | | | | | | | | | | | | | | | | | | | | | | | | | | | | | | | | | | | | | | | | | | | | | | | | | | | | | | | | | | | | | | | | | | | | | | | | | | | | | | | | | | | | | | | | | | | | | | | | | | | | | | | | | | | | | | | | | | | | | | | | | | | | | | | | | | | | | | | |
| 1 Wheeled Water Resistant Backpack | | | | | | | | | | | | | | | | | | | | | | | | | | | | | | | | | | | | | | | | | | | | | | | | | | | | | | | | | | | | | | | | | | | | | | | | | | | | | | | | | | | | | | | | | | | | | | | | | | | | | | | | | | | | | | | | | | | | | | | | | | | | | | | | | | | | | | | | | | | | | | | | | |
| 6 Pouches of Water, 4.225 oz. each | | | | | | | | | | | | | | | | | | | | | | | | | | | | | | | | | | | | | | | | | | | | | | | | | | | | | | | | | | | | | | | | | | | | | | | | | | | | | | | | | | | | | | | | | | | | | | | | | | | | | | | | | | | | | | | | | | | | | | | | | | | | | | | | | | | | | | | | | | | | | | | | | |
| 1 3600 Calorie Mayday Food Bar | | | | | | | | | | | | | | | | | | | | | | | | | | | | | | | | | | | | | | | | | | | | | | | | | | | | | | | | | | | | | | | | | | | | | | | | | | | | | | | | | | | | | | | | | | | | | | | | | | | | | | | | | | | | | | | | | | | | | | | | | | | | | | | | | | | | | | | | | | | | | | | | | |
| 1 Large MayDay Solar Blanket | | | | | | | | | | | | | | | | | | | | | | | | | | | | | | | | | | | | | | | | | | | | | | | | | | | | | | | | | | | | | | | | | | | | | | | | | | | | | | | | | | | | | | | | | | | | | | | | | | | | | | | | | | | | | | | | | | | | | | | | | | | | | | | | | | | | | | | | | | | | | | | | | |
| 2 12-hour Light Sticks | | | | | | | | | | | | | | | | | | | | | | | | | | | | | | | | | | | | | | | | | | | | | | | | | | | | | | | | | | | | | | | | | | | | | | | | | | | | | | | | | | | | | | | | | | | | | | | | | | | | | | | | | | | | | | | | | | | | | | | | | | | | | | | | | | | | | | | | | | | | | | | | | |
| 2 pkg Wet naps, 3-pack | | | | | | | | | | | | | | | | | | | | | | | | | | | | | | | | | | | | | | | | | | | | | | | | | | | | | | | | | | | | | | | | | | | | | | | | | | | | | | | | | | | | | | | | | | | | | | | | | | | | | | | | | | | | | | | | | | | | | | | | | | | | | | | | | | | | | | | | | | | | | | | | | |
| 1 Dynamo FM Radio w/ LED Flashlight | | | | | | | | | | | | | | | | | | | | | | | | | | | | | | | | | | | | | | | | | | | | | | | | | | | | | | | | | | | | | | | | | | | | | | | | | | | | | | | | | | | | | | | | | | | | | | | | | | | | | | | | | | | | | | | | | | | | | | | | | | | | | | | | | | | | | | | | | | | | | | | | | |
| 1 Bloodstopper Trauma Dressing | | | | | | | | | | | | | | | | | | | | | | | | | | | | | | | | | | | | | | | | | | | | | | | | | | | | | | | | | | | | | | | | | | | | | | | | | | | | | | | | | | | | | | | | | | | | | | | | | | | | | | | | | | | | | | | | | | | | | | | | | | | | | | | | | | | | | | | | | | | | | | | | | |
| 1 Adult Poncho | | | | | | | | | | | | | | | | | | | | | | | | | | | | | | | | | | | | | | | | | | | | | | | | | | | | | | | | | | | | | | | | | | | | | | | | | | | | | | | | | | | | | | | | | | | | | | | | | | | | | | | | | | | | | | | | | | | | | | | | | | | | | | | | | | | | | | | | | | | | | | | | | |
| 1 Yellow Rope | | | | | | | | | | | | | | | | | | | | | | | | | | | | | | | | | | | | | | | | | | | | | | | | | | | | | | | | | | | | | | | | | | | | | | | | | | | | | | | | | | | | | | | | | | | | | | | | | | | | | | | | | | | | | | | | | | | | | | | | | | | | | | | | | | | | | | | | | | | | | | | | | |
| 1 pair Work Gloves | | | | | | | | | | | | | | | | | | | | | | | | | | | | | | | | | | | | | | | | | | | | | | | | | | | | | | | | | | | | | | | | | | | | | | | | | | | | | | | | | | | | | | | | | | | | | | | | | | | | | | | | | | | | | | | | | | | | | | | | | | | | | | | | | | | | | | | | | | | | | | | | | |
| 1 Personal Water Filter | | | | | | | | | | | | | | | | | | | | | | | | | | | | | | | | | | | | | | | | | | | | | | | | | | | | | | | | | | | | | | | | | | | | | | | | | | | | | | | | | | | | | | | | | | | | | | | | | | | | | | | | | | | | | | | | | | | | | | | | | | | | | | | | | | | | | | | | | | | | | | | | | |
| 1 box Slow-Burn Emergency Candles | | | | | | | | | | | | | | | | | | | | | | | | | | | | | | | | | | | | | | | | | | | | | | | | | | | | | | | | | | | | | | | | | | | | | | | | | | | | | | | | | | | | | | | | | | | | | | | | | | | | | | | | | | | | | | | | | | | | | | | | | | | | | | | | | | | | | | | | | | | | | | | | | |
| 1 box Waterproof Matches (50 per box) | | | | | | | | | | | | | | | | | | | | | | | | | | | | | | | | | | | | | | | | | | | | | | | | | | | | | | | | | | | | | | | | | | | | | | | | | | | | | | | | | | | | | | | | | | | | | | | | | | | | | | | | | | | | | | | | | | | | | | | | | | | | | | | | | | | | | | | | | | | | | | | | | |
| 1 Spoon/Fork Combo | | | | | | | | | | | | | | | | | | | | | | | | | | | | | | | | | | | | | | | | | | | | | | | | | | | | | | | | | | | | | | | | | | | | | | | | | | | | | | | | | | | | | | | | | | | | | | | | | | | | | | | | | | | | | | | | | | | | | | | | | | | | | | | | | | | | | | | | | | | | | | | | | |
| 1 Vegetable Lasagna | | | | | | | | | | | | | | | | | | | | | | | | | | | | | | | | | | | | | | | | | | | | | | | | | | | | | | | | | | | | | | | | | | | | | | | | | | | | | | | | | | | | | | | | | | | | | | | | | | | | | | | | | | | | | | | | | | | | | | | | | | | | | | | | | | | | | | | | | | | | | | | | | |
| 2 Maxi-pads | | | | | | | | | | | | | | | | | | | | | | | | | | | | | | | | | | | | | | | | | | | | | | | | | | | | | | | | | | | | | | | | | | | | | | | | | | | | | | | | | | | | | | | | | | | | | | | | | | | | | | | | | | | | | | | | | | | | | | | | | | | | | | | | | | | | | | | | | | | | | | | | | |
| 1 Clear-Solution Hygiene Kit | | | | | | | | | | | | | | | | | | | | | | | | | | | | | | | | | | | | | | | | | | | | | | | | | | | | | | | | | | | | | | | | | | | | | | | | | | | | | | | | | | | | | | | | | | | | | | | | | | | | | | | | | | | | | | | | | | | | | | | | | | | | | | | | | | | | | | | | | | | | | | | | | |
| 2 pkg Pocket Tissue | | | | | | | | | | | | | | | | | | | | | | | | | | | | | | | | | | | | | | | | | | | | | | | | | | | | | | | | | | | | | | | | | | | | | | | | | | | | | | | | | | | | | | | | | | | | | | | | | | | | | | | | | | | | | | | | | | | | | | | | | | | | | | | | | | | | | | | | | | | | | | | | | |
| 1 Wag Bag Sanitation Kit | | | | | | | | | | | | | | | | | | | | | | | | | | | | | | | | | | | | | | | | | | | | | | | | | | | | | | | | | | | | | | | | | | | | | | | | | | | | | | | | | | | | | | | | | | | | | | | | | | | | | | | | | | | | | | | | | | | | | | | | | | | | | | | | | | | | | | | | | | | | | | | | | |
| 2 Anti-bacterial Bar Soap | | | | | | | | | | | | | | | | | | | | | | | | | | | | | | | | | | | | | | | | | | | | | | | | | | | | | | | | | | | | | | | | | | | | | | | | | | | | | | | | | | | | | | | | | | | | | | | | | | | | | | | | | | | | | | | | | | | | | | | | | | | | | | | | | | | | | | | | | | | | | | | | | |
| 1 Blue Tarp | | | | | | | | | | | | | | | | | | | | | | | | | | | | | | | | | | | | | | | | | | | | | | | | | | | | | | | | | | | | | | | | | | | | | | | | | | | | | | | | | | | | | | | | | | | | | | | | | | | | | | | | | | | | | | | | | | | | | | | | | | | | | | | | | | | | | | | | | | | | | | | | | |
| Deluxe Emergency Honey Bucket Kits, per kit \$85 | | | | | | | | | | | | | | | | | | | | | | | | | | | | | | | | | | | | | | | | | | | | | | | | | | | | | | | | | | | | | | | | | | | | | | | | | | | | | | | | | | | | | | | | | | | | | | | | | | | | | | | | | | | | | | | | | | | | | | | | | | | | | | | | | | | | | | | | | | | | | | | | | |
| In Addition to Food, Water, Blankets, etc: | | | | | | | | | | | | | | | | | | | | | | | | | | | | | | | | | | | | | | | | | | | | | | | | | | | | | | | | | | | | | | | | | | | | | | | | | | | | | | | | | | | | | | | | | | | | | | | | | | | | | | | | | | | | | | | | | | | | | | | | | | | | | | | | | | | | | | | | | | | | | | | | | |
| Toilet | | | | | | | | | | | | | | | | | | | | | | | | | | | | | | | | | | | | | | | | | | | | | | | | | | | | | | | | | | | | | | | | | | | | | | | | | | | | | | | | | | | | | | | | | | | | | | | | | | | | | | | | | | | | | | | | | | | | | | | | | | | | | | | | | | | | | | | | | | | | | | | | | |
| Liners | | | | | | | | | | | | | | | | | | | | | | | | | | | | | | | | | | | | | | | | | | | | | | | | | | | | | | | | | | | | | | | | | | | | | | | | | | | | | | | | | | | | | | | | | | | | | | | | | | | | | | | | | | | | | | | | | | | | | | | | | | | | | | | | | | | | | | | | | | | | | | | | | |
| Chemical disinfectants | | | | | | | | | | | | | | | | | | | | | | | | | | | | | | | | | | | | | | | | | | | | | | | | | | | | | | | | | | | | | | | | | | | | | | | | | | | | | | | | | | | | | | | | | | | | | | | | | | | | | | | | | | | | | | | | | | | | | | | | | | | | | | | | | | | | | | | | | | | | | | | | | |
| Duct Tape, 10 yds. | | | | | | | | | | | | | | | | | | | | | | | | | | | | | | | | | | | | | | | | | | | | | | | | | | | | | | | | | | | | | | | | | | | | | | | | | | | | | | | | | | | | | | | | | | | | | | | | | | | | | | | | | | | | | | | | | | | | | | | | | | | | | | | | | | | | | | | | | | | | | | | | | |
| Gas & Water Shut-off Tool | | | | | | | | | | | | | | | | | | | | | | | | | | | | | | | | | | | | | | | | | | | | | | | | | | | | | | | | | | | | | | | | | | | | | | | | | | | | | | | | | | | | | | | | | | | | | | | | | | | | | | | | | | | | | | | | | | | | | | | | | | | | | | | | | | | | | | | | | | | | | | | | | |
| Water Heater Adapters \$10 | | | | | | | | | | | | | | | | | | | | | | | | | | | | | | | | | | | | | | | | | | | | | | | | | | | | | | | | | | | | | | | | | | | | | | | | | | | | | | | | | | | | | | | | | | | | | | | | | | | | | | | | | | | | | | | | | | | | | | | | | | | | | | | | | | | | | | | | | | | | | | | | | |
| Water Pouches, 6-pack in a Drinking Container \$5 | | | | | | | | | | | | | | | | | | | | | | | | | | | | | | | | | | | | | | | | | | | | | | | | | | | | | | | | | | | | | | | | | | | | | | | | | | | | | | | | | | | | | | | | | | | | | | | | | | | | | | | | | | | | | | | | | | | | | | | | | | | | | | | | | | | | | | | | | | | | | | | | | |
| Hand Warmers, pair \$3 | | | | | | | | | | | | | | | | | | | | | | | | | | | | | | | | | | | | | | | | | | | | | | | | | | | | | | | | | | | | | | | | | | | | | | | | | | | | | | | | | | | | | | | | | | | | | | | | | | | | | | | | | | | | | | | | | | | | | | | | | | | | | | | | | | | | | | | | | | | | | | | | | |
| Food Bars: | 400 Calories \$2 | | | | | | | | | | | | | | | | | | | | | | | | | | | | | | | | | | | | | | | | | | | | | | | | | | | | | | | | | | | | | | | | | | | | | | | | | | | | | | | | | | | | | | | | | | | | | | | | | | | | | | | | | | | | | | | | | | | | | | | | | | | | | | | | | | | | | | | | | | | | | | | | |
| | 1200 Calories \$4 | | | | | | | | | | | | | | | | | | | | | | | | | | | | | | | | | | | | | | | | | | | | | | | | | | | | | | | | | | | | | | | | | | | | | | | | | | | | | | | | | | | | | | | | | | | | | | | | | | | | | | | | | | | | | | | | | | | | | | | | | | | | | | | | | | | | | | | | | | | | | | | | |
| | 2400 Calories \$5 | | | | | | | | | | | | | | | | | | | | | | | | | | | | | | | | | | | | | | | | | | | | | | | | | | | | | | | | | | | | | | | | | | | | | | | | | | | | | | | | | | | | | | | | | | | | | | | | | | | | | | | | | | | | | | | | | | | | | | | | | | | | | | | | | | | | | | | | | | | | | | | | |
| c/77-nu Solar/Dynamo Radio/Flashlight/Cell Charger \$30 | | | | | | | | | | | | | | | | | | | | | | | | | | | | | | | | | | | | | | | | | | | | | | | | | | | | | | | | | | | | | | | | | | | | | | | | | | | | | | | | | | | | | | | | | | | | | | | | | | | | | | | | | | | | | | | | | | | | | | | | | | | | | | | | | | | | | | | | | | | | | | | | | |

Backpacks and roller bag have extra space for clothes, medicines, and other personal needs.

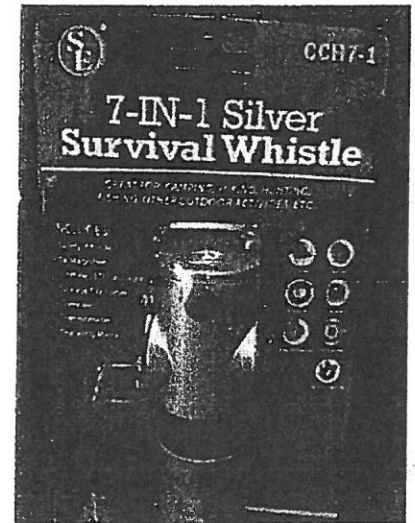
Order from Sylvia (562) 260-8919. Verify prices and contents when ordering. All prices include tax.

Seal Beach Police Volunteers Association, Inc.



911 Seal Beach Blvd.
Seal Beach, CA 90740

**Be Smart.
Be Responsible.
Be PREPARED.**



72 Hour Emergency Kit w/ 5 year shelf life

Roll and Go Survival Kit (27 piece) 1 person 3-day @ \$ 85.00 (including Tax)

This backpack on wheels makes it easy to take your survival gear anywhere. Available for one or two people.

- 1 - Backpack
- 1 - 3600 Calorie Mayday Food Bar
- 1 - Vegetable Lasagna
- 6 - Pouches of Water
- 1 - Mayday large Solar Blanket
- 1 - pair of Work Gloves
- 1 - Adult Poncho
- 2 - 12 hour Light sticks
- 1 - Dynamo FM Radio w/LED Flashlight
- 2 - Maxi-pads
- 1 - Clear Solution Hygiene Kit
- 2 - Pocket Tissue
- 2 - Wet Naps (3 pack)
- 1 - Yellow Rope
- 1 - Spoon/Fork Combo
- 1 - Bloodstopper Trauma Dressing
- 1 - box of 50 Waterproof Matches
- 1 - Slow Burn Emergency Candles
- 1 - Wag Bag Sanitation Kit
- 2 - Anti-Bacterial Bar Soap
- 1 - Blue Tarp
- 1 - Personal Water Filter



2 Person Kit (KT-WH2) 2 person 3-days @ \$ 90.00 (including Tax)



Emergency Preparedness Supplies are available through the Seal Beach Police Volunteers.

Contact Sylvia Klebe @562-260-8919 or visit us at the sub-station by the Seal Beach Pier.

We have many other sizes of emergency kits available as well as Police Badge Money Clips, Challenge Coins, Whistles, Emergency Blankets, long shelf life water and food bars.