

LAUNDRY ROOM INFORMATION

No Smoking



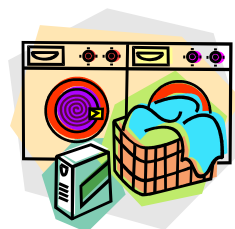
in the
Laundry Area

DO NOT start before 7:00 AM and DO end before 9:00 PM
(As a courtesy to the shareholders who live next to the Laundry Rooms)

Machines are for the use of **Mutual 12 residents only!**
(Live-in Registered Caregivers may wash personal laundry)

**AS A COURTESY TO OTHER SHAREHOLDERS
DO NOT USE MORE THAN
TWO (2) WASHERS/DRYERS AT A TIME**

**Be Courteous!
Remove clothes
from washers & dryers ASAP!**



PLEASE



**DO NOT overload machines!
DO NOT use tints or dyes!
DO NOT exceed recommended amount of detergent!
No pet blankets or bedding!
No laundry with soiled bodily waste!**

PLEASE



**Remove lint from dryer filter after use!
Clean up after yourself!
Rinse sink after using!
Turn off lights—close doors & windows when leaving.
(Keeps the critters out!)**

**PLACE OUT-OF-ORDER CARDS ON BROKEN/INOPERABLE
MACHINES AND CALL LAUNDRY ROOM DIRECTOR LISTED ON ROSTER!**